



# Fuji Component Parts USA, Inc.

## Company Profile



**"A World-class Distributor of Small Component Parts"**

**4115 W. 54<sup>th</sup> Street, Indianapolis, IN 46254**



- **Our customers are always our top priority.**
- **Promote employee harmony, teamwork and job satisfaction.**
- **Adopt global strategies insuring our ability to meet our customer's present and future demands.**

*“ We are humbly committed to customer satisfaction and innovative problem solving which affords us the ability to recommend solutions to your problems.”*

*Chairman – Hiroshi Watanabe*



## **Quality Policy- Quality Assurance**

**Fuji Component Parts USA, Inc. is dedicated to providing quality products that meet the requirements and satisfaction of our customers and other interested parties. We are committed to our high corporate standards for excellence to achieve this policy. The organization shall comply with the quality management system. We encourage involvement of our employees to continually improve our business processes.**



### **Certification:**

**ISO/TS 16949: 2009  
JAN.2012-JAN.2016**



## **Environmental Policy**

**We are committed to a clean healthy environment. We will provide our customers with safe reliable products shipped from our facility. We believe that an environmental policy based upon ISO requirements adds to the strength of our company, and benefits our company by contributing to the overall economic and environmental health of the community that we serve.**

**We will strongly comply with relevant laws and regulations as applicable to our facility and operations.**

**We will utilize a continuous improvement philosophy in our Environmental Management System.**

**We will strive to prevent pollution.**

**Certification:                      ISO14001:2004                      NOV.2011-NOV.2014**



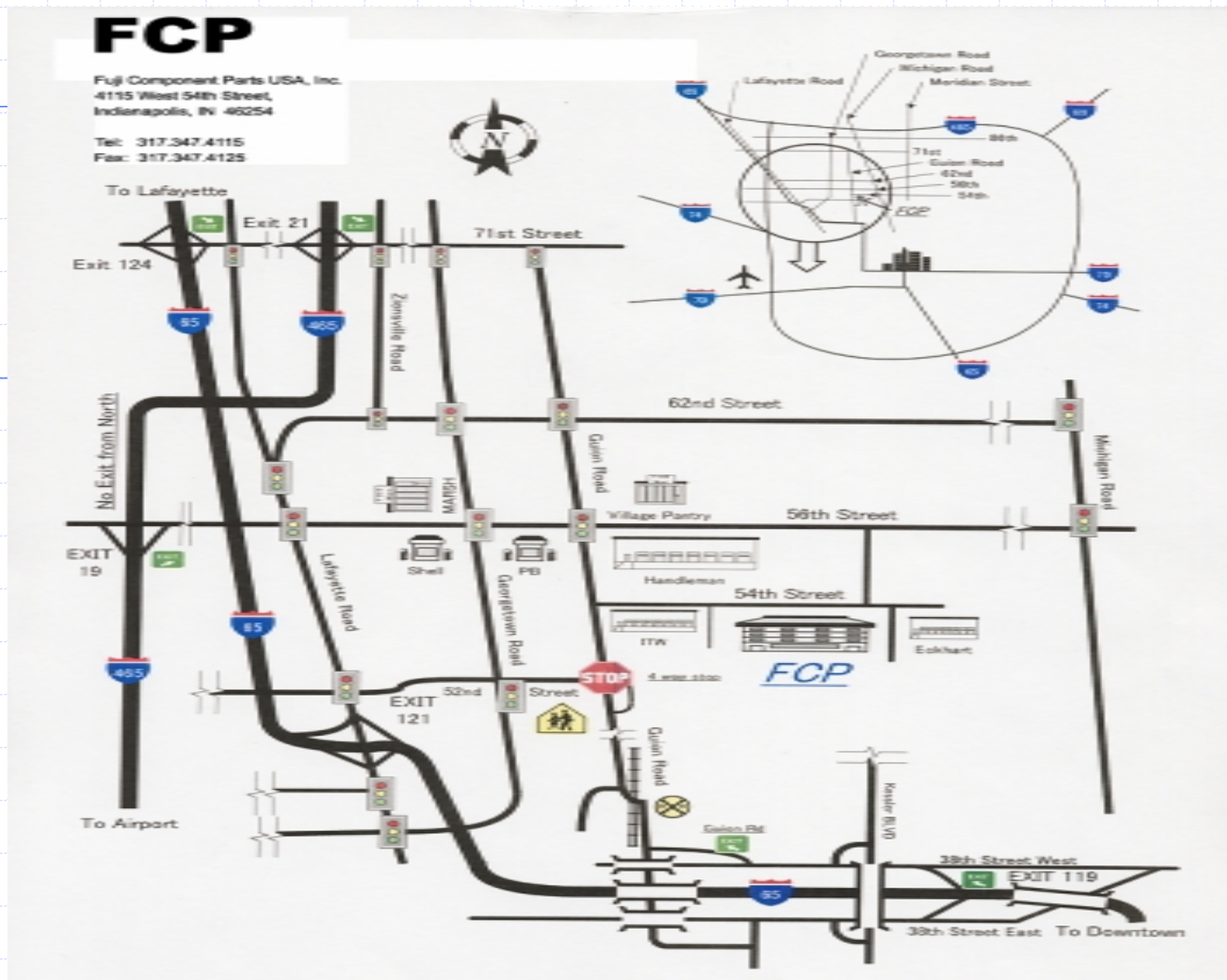
## **Fuji Component Parts USA, Inc.**

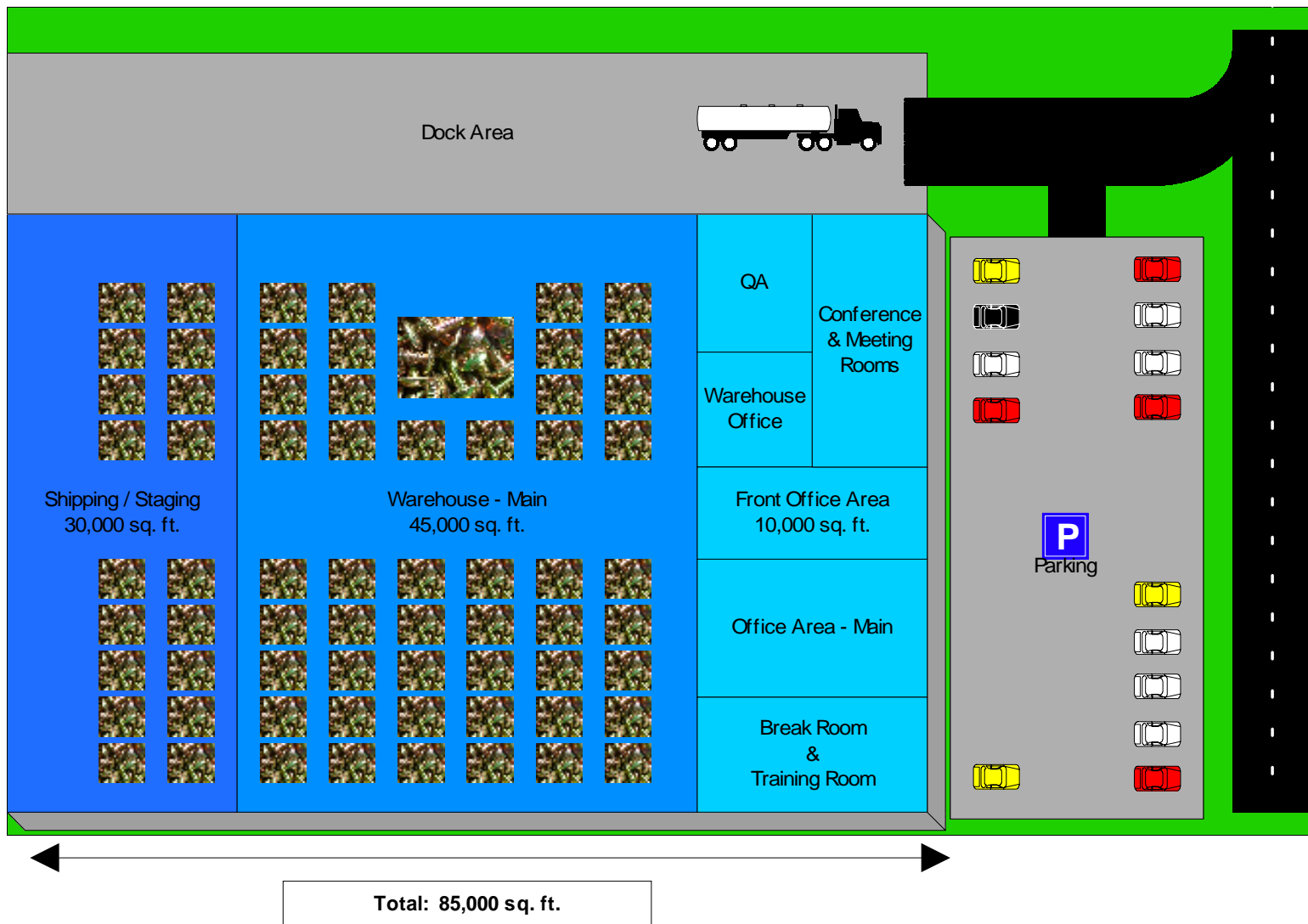


**Our 85,000 sq. ft. sales & distribution center is located centrally in Indianapolis, IN.**

**This allows next-day delivery to over 80% of the automobile manufacturing industry in the United States.**

**4115 W. 54<sup>th</sup> Street, Indianapolis, IN 46254**









**Parts are secured from select manufacturers throughout North America, Japan, and Taiwan. After passing rigorous inspection and quality standards they are delivered to customers in North America, South America, and Japan.**





**FBK, our parent company, located in Gunman, Japan, provides support in the procurement of quality parts at competitive costs.**

**SFY, a division of FBK is located in Taiwan, permitting additional sources of quality products.**





## Company Profile

**Name:** Fuji Component Parts USA, Inc.

**Established:** April 1988

**Capital:** \$1,500,000

**Address:** 4115 W. 54<sup>th</sup> Street Indianapolis, IN 46254

**Facility:** 85,000 sq. ft. (Office & Warehouse combined)

**Employees:** 40

**Business Outline:**

1. Distribution of Automotive / Industrial Fastener and Component Products.
2. Warehousing, Inventory Control and Light Assembly.

**Customers:** Subaru of Indiana Automotive, Inc., ADVICS, Inc., Alpha Technology Corporation, American Mitsuba Corporation, American Showa, Inc., Austin Tri-Hawk Automotive, Inc., ELSA LLC., GECOM, Heartland Automotive, LLC., TB Tech, Keihin Aicon North America, Inc., Newman Technology, NHK Seating of America, NSK safety Technology TOA LLC., TRAM, TS Tech USA Corporation... *and many more.*



**- Warehousing Allows Timely Delivery -**



**Parts are received, inspected, and inventoried in our large, clean, warehouse. Our FIFO inventory system assures our customers are receiving fresh product. Our team members are continually trained to ensure orders are filled accurately, packed carefully, and shipped for timely delivery. We offer flexible packaging/delivery options including: specialized work cell and bin stocking programs, returnable containers and multi-part bagging. We provide customer for bar coding ordering capability facilitate to facilitate your requirements for improved accuracy and reduced cost.**

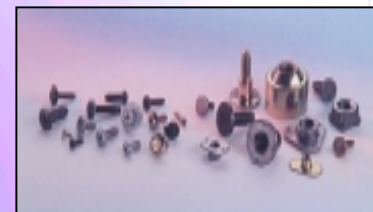




**Bolts**



**Washers & Nuts**



**Screws, Welded Parts**



**Component Parts**



**Machined / Cold Headed**



**Stamped Parts**



**Plastic & Rubber Parts**



**Hex Head Bolts**  
**Square Head Bolts**  
**Torx head Bolts**  
**Flange Bolts**  
**Weld Bolts**  
**Stud Bolts**  
**Socket Head Bolts**  
**Wing Bolts**  
**Eye Bolts**  
**Hook Bolts**  
**Set Bolts**



**Plain Washers**  
**Spring Washers**  
**Lock Washers**  
**Toothed Washers**  
**Wave Washers**  
**Welding Washers**  
**Rossett Washers**  
**Nylon Washers**





**Hex Nuts**  
**Square Nuts**  
**Round Nuts**  
**Flange Nuts**  
**Cap Nuts**  
**Push Nuts**  
**Castle Nuts**  
**Self-Lock Nuts**  
**Spring Nuts**  
**Pierce Nuts**  
**Conical Nuts**  
**Weld Nuts**  
**Wing Nuts**  
**Slotted Nuts**  
**Special Nuts**



**Sheetmetal  
Tapping Screw  
SEMS  
Set Screws**



**Straight Pins**  
**Parallel Pins**  
**Spring Pins**  
**Clevis Pins**  
**Split Pins**  
**Taper Pins**  
**Cotter Pins**



**Cold Headed Rivets**  
**Hot Headed Rivets**  
**Tubular Rivets**  
**Blind Rivets**

## Products – Component Parts



**Plastic Parts**

**Rubber Parts**

**Clips**

**Plugs**

**Ties**

**Clamps**

**Hose Bands**

**Tapes**

**Insulators**

**Precision Press Parts**

**Precision Machined Parts**

**Customized Parts**

**Die Cut Foam**

## Products – Machined & Cold Headed Parts



## Products – Stamped Parts

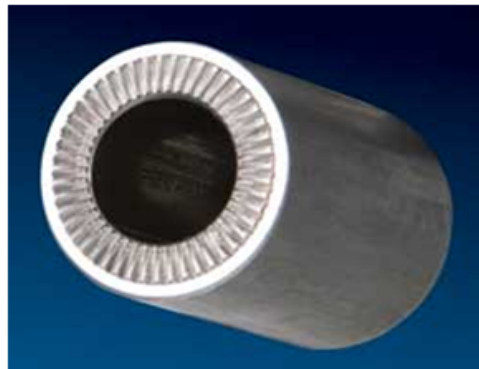


**Stamped Parts**





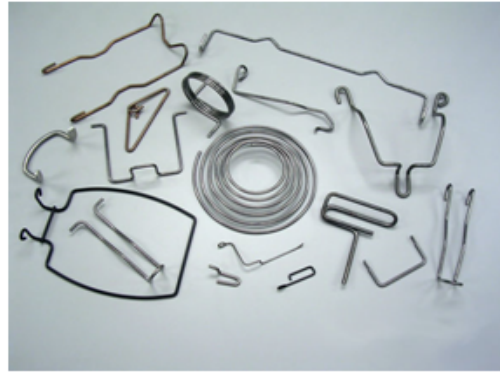
## Products –more than just fasteners



## Products –more than just fasteners



## Products –more than just fasteners







# Fuji Component Parts USA, Inc.

*"We look forward to serving your fastener needs."*

**4115 W. 54<sup>th</sup> Street, Indianapolis, IN 46254**